

Directions to Port Mellon

1. Take BC Ferries from Horseshoe Bay to Langdale.
2. Exit the ferry and terminal and follow the signs right to Port Mellon.
3. Follow Port Mellon Highway for 12.2 KM (the road bends a few times, stay on Port Mellon Highway).
4. Upon arrival to site entrance, notify security guard at window which contractor you are with, and that you are going to camp.
5. Proceed up the hill to guest parking, second exit on the right (see Figure 2).

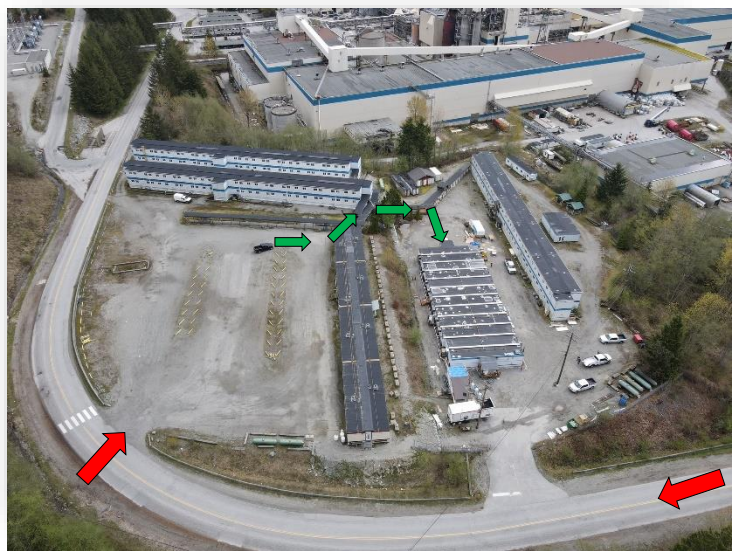
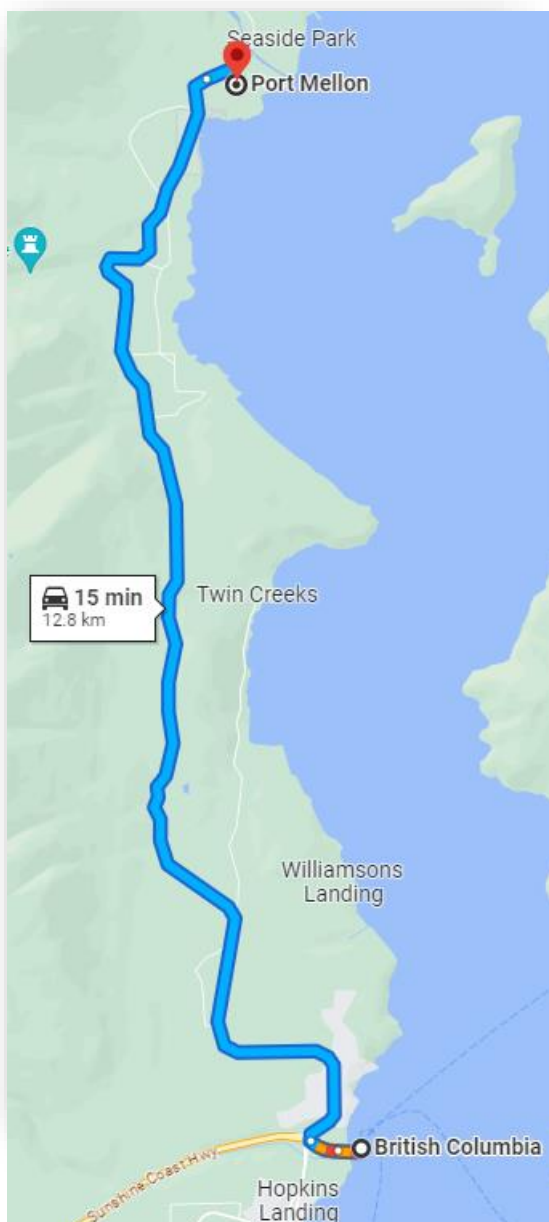


Figure 1 (left): Road from terminal to camp.

Figure 2 (above): Road from security gate to guest parking area. Green arrows indicate walking directions to front desk for check-in.