

Baker Mine Directions from PG

1. From Prince George, drive 148 KM North on Highway 97 toward the town of Mackenzie, BC.
2. Turn Left on Finlay Nation Forest Service Road. There is no sign. Coordinates for Google Maps are: 55.10405241878004, -122.99329412278668
3. At the T intersection at 62KM, Turn Right.
4. At the next T, Turn Left.
5. Just after Marker 173 there is a Y intersection, Stay Left.
6. Just after Marker 46, Turn Right.
7. Past 166 there is Y, Stay Left. (This is a rough road with a couple nasty hills.)
8. The camp is at about 53KM.

Baker-Shasta Camp Lat/Long

Lat: 57.28059834

Long: -127.1163113

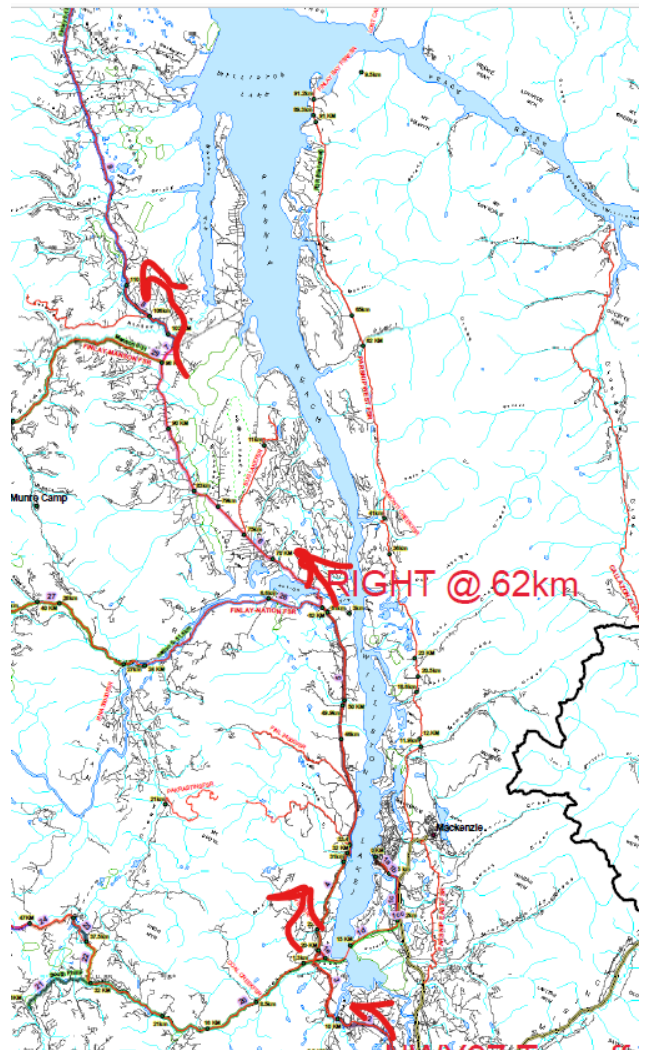
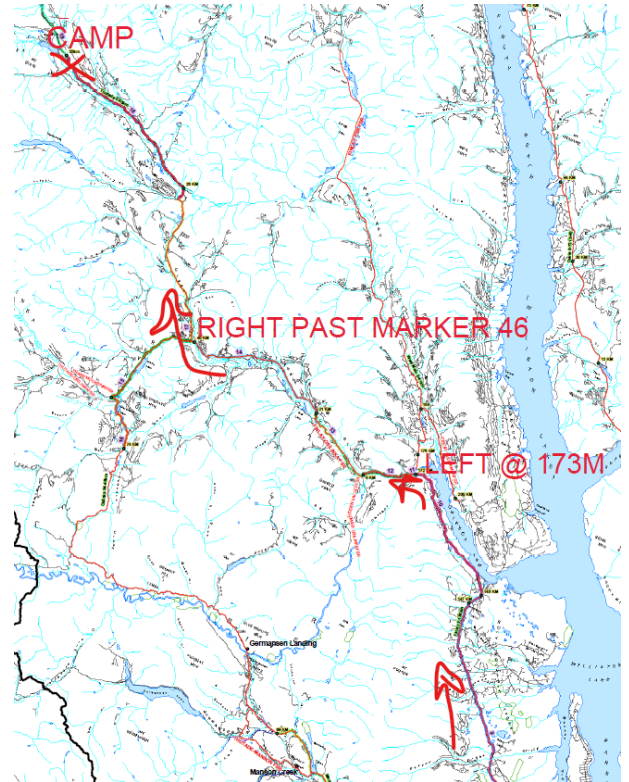
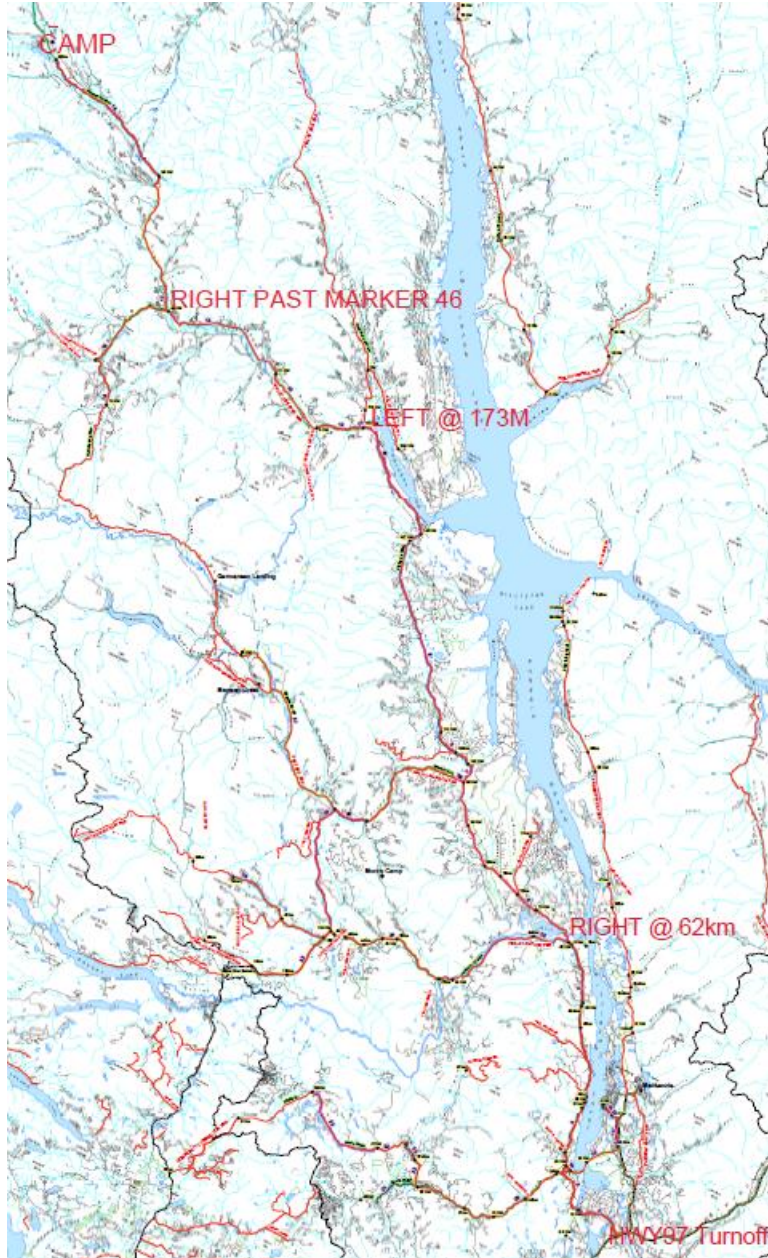
Table 6.3-1: Radio Frequencies

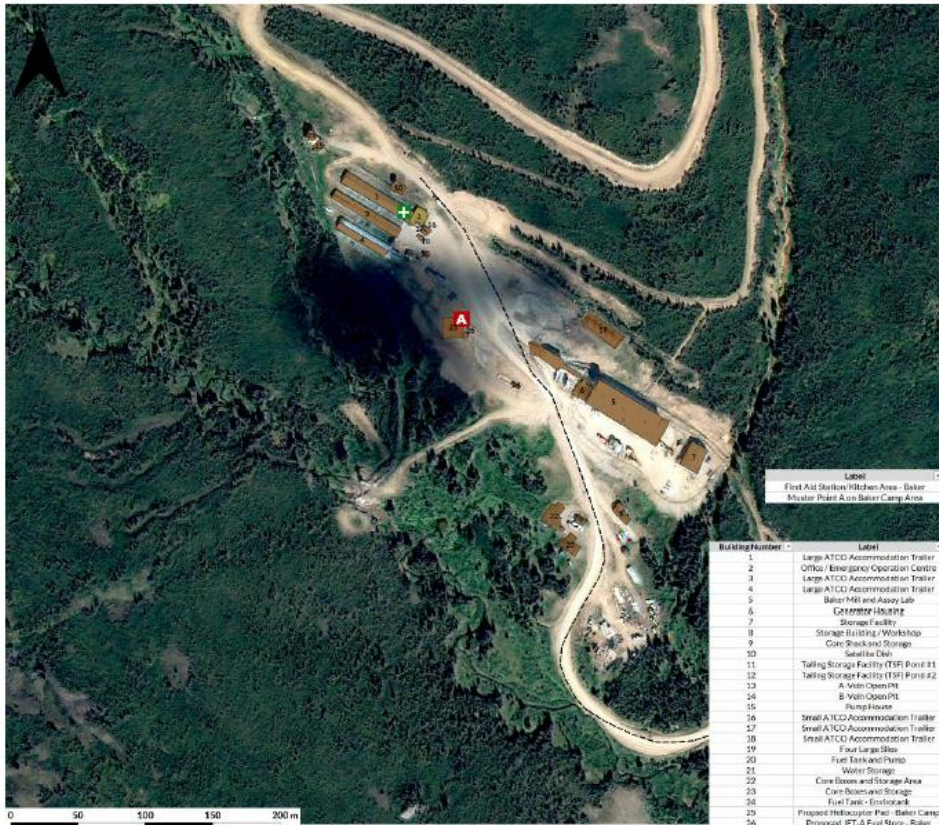
FSR / MOTI / SUP (Access Roads)	RR (Range Road) Frequency	Road Distance (km)	RR Junction from Highway 97 Distance
Finlay-Nation	RR2	62	HWY 97/Finlay-Nation: 62km
Finlay	RR-5 / RR-6 / RR-7	119.5	Finlay-Nation/Finlay: 181.5km
Finlay-Oslinka	RR-8	38	Finlay/Finlay-Oslinka: 219.5km
Aiken ml	RR-6	61	Finlay-Oslinka/Aiken ml: 280.5km
Thutade Ext MOTI	RR-6	3.5	Aiken ml/Thutade ext: 284km
Kemess MOTI	RR-6	72	Thutade ext/Kemess MoTi: 356km
Kemess SUP	RR-6	44	Kemess MoTi/Kemess SUP: 400km
Sturdis SUP	RR-6	23	Kemess SUP/Sturdis SUP: 423km
<i>unnamed trails</i>	LAD 2	6	Sturdis SUP/ <i>unnamed trails</i> : 429km

Below: Full Map

Top Right: Top Half of map zoomed in






Below Right: Lower half of map zoomed in




EDG GOLD CORP.

Baker-Shasta Infrastructure Overview

Baker Inset Map
Map Legend
Infrastructure

-  First Aid Station
-  Muster Point A
-  Evacuation Route
-  Emergency Operations Centre (EOC)
-  Building

Author: Liam F. Connor
 Date: 14 February 2021
 CRS: NAD83 Zone 9
 Scale: 1:1000

Label	Easting (NAD83)	Northing (NAD83)	Latitude	Longitude
First Aid Station/Hitcher Area - Baker	6326795868	6350126170	57.28	-127.516
Muster Point A on Baker Camp Area	6336598842	6350127847	57.28	-127.515

Bidding Number	Label	Easting (NAD83)	Northing (NAD83)	Latitude	Longitude
1	Large ATCO Accommodation Trailer	6325887773	6350302268	57.28089834	-127.161113
2	Office / Emergency Operation Centre	6329966754	6350177292	57.28065604	-127.1157927
3	Large ATCO Accommodation Trailer	6326518426	6350179468	57.28080211	-127.1564365
4	Large ATCO Accommodation Trailer	6326484087	6350151989	57.28021188	-127.1566213
5	Baker Mill and Alloy Lab	63273473	6350098935	57.27978669	-127.1234678
6	Generator Housing	6327114489	63504835	57.27927013	-127.1338497
7	Storage Facility	6327945188	634999284	57.27880261	-127.1321956
8	Storage Building / Workshop	610740324	634951491	57.27864207	-127.1338463
9	Cone Stock and Storage	610750335	634952115	57.27864919	-127.1339125
10	Sulfuric Acid	6325251051	6350186336	57.28061313	-127.1562411
11	Tailing Storage Facility (TSF) Pond #1	6341796655	6348593925	57.27430857	-127.106337
12	Tailing Storage Facility (TSF) Pond #2	6344244726	6349381466	57.27380302	-127.1023363
13	A Vash Open Pit	6348221449	634727318	57.28252684	-127.1318686
14	B Vash Open Pit	6341562702	6348796384	57.28752947	-127.200366
15	Pump House	6335425226	6340229868	57.28004612	-127.1370024
16	Small ATCO Accommodation Trailer	6329967152	6350166252	57.28020989	-127.1158997
17	Small ATCO Accommodation Trailer	6329964069	6350166477	57.28020167	-127.1157955
18	Small ATCO Accommodation Trailer	6329918981	6350161479	57.28031275	-127.1157797
19	Four Large Skids	6327563934	6350091107	57.27966683	-127.1325729
20	Fuel Tank and Pump	6326487771	6350149439	57.28000489	-127.1157262
21	Water Storage	6329305261	6350237161	57.28101246	-127.1170994
22	Cone Dumps and Storage Area	6326807605	6349551442	57.27842913	-127.1422553
23	Cone Boulders Storage	6327026874	6349934309	57.27854275	-127.1464683
24	Fuel Tank - Emulsion	6316622765	6350052539	57.27931811	-127.1166663
25	Protest Helicopter Pad - Baker Camp	6326221205	6350178753	57.28046044	-127.1330284
26	Proposed RTA Fuel Store - Baker	6354412905	6350175481	57.28000048	-127.1144464